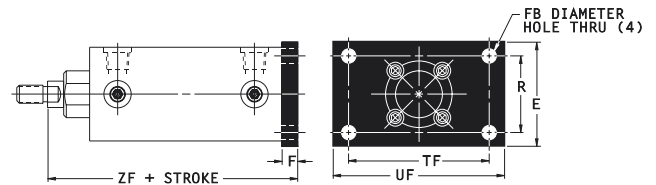
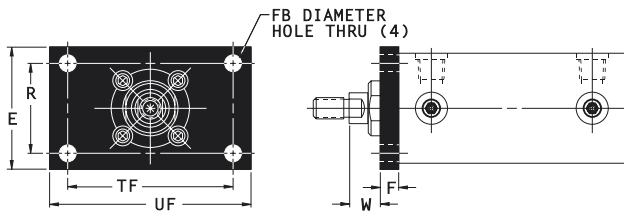


NFPA INTERCHANGEABLE ROUND BODY CYLINDERS

FLAIRLINE NFPA INTERCHANGEABLE CYLINDERS ARE AVAILABLE WITH YOUR CHOICE OF FACTORY INSTALLED MOUNTINGS



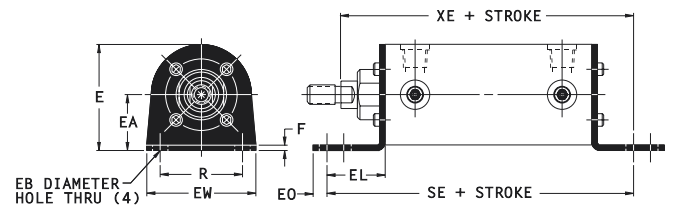
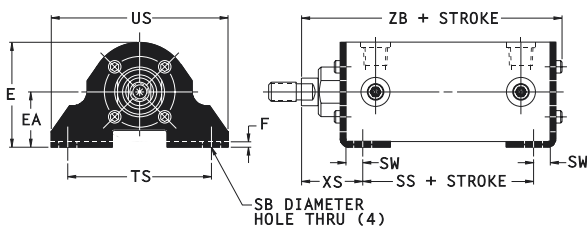
FRONT FLANGE MOUNT (NFPA MF1)

Bore Size	DIMENSIONS						
	E	F	FB	R	TF	UF	W
1 1/2	2	3/8	9/32	1.43	2.75	3 3/8	5/8
2	2 1/2	3/8	11/32	1.84	3.38	4 1/8	5/8
2 1/2	3	3/8	11/32	2.19	3.88	4 5/8	5/8
3 1/4	3 3/4	5/8	13/32	2.76	4.69	5 1/2	3/4
4	4 1/2	5/8	13/32	3.32	5.44	6 1/4	3/4

Included on Series FINR, OINR and OIMNR.

REAR FLANGE MOUNT (NFPA MF2)

Bore Size	DIMENSIONS						
	E	F	FB	R	TF	UF	ZF
1 1/2	2	3/8	9/32	1.43	2.75	3 3/8	5
2	2 1/2	3/8	11/32	1.84	3.38	4 1/8	5
2 1/2	3	3/8	11/32	2.19	3.88	4 5/8	5 1/8
3 1/4	3 3/4	5/8	13/32	2.76	4.69	5 1/2	6 1/4
4	4 1/2	5/8	13/32	3.32	5.44	6 1/4	6 1/4



SIDE LUG MOUNTS (NFPA MS2)

Bore Size	DIMENSIONS									
	E	EA	F	SB	SS	SW	TS	US	XS	ZB
1 1/2	1 7/8	1	1/8	13/32	2 7/8	3/8	2 3/4	3 1/2	1 3/8	4.92
2	2 3/8	1 1/4	1/8	13/32	2 7/8	3/8	3 1/4	4	1 3/8	4.95
2 1/2	2 7/8	1 1/2	3/16	13/32	3	3/8	3 3/4	4 1/2	1 3/8	5.19
3 1/4	3 5/8	1 7/8	1/4	17/32	3 1/4	1/2	4 3/4	5 3/4	1 7/8	6.19
4	4 3/8	2 1/4	5/16	17/32	3 1/4	1/2	5 1/2	6 1/2	1 7/8	6.25

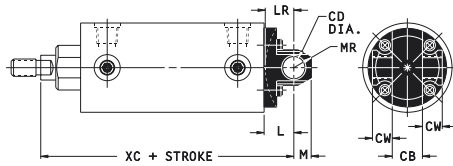
END LUG MOUNTS (NFPA MS7)

Bore Size	DIMENSIONS									
	E	EA	EB	EL	EO	EW	F	R	SE	XE
1 1/2	1 7/8	1	9/32	1 1/8	1/4	2	1/8	1.43	5 1/2	5 3/8
2	2 3/8	1 1/4	11/32	1 5/16	5/16	2 7/16	1/8	1.84	5 7/8	5 9/16
2 1/2	2 7/8	1 1/2	11/32	1 7/16	7/16	3	3/16	2.19	6 1/4	5 13/16
3 1/4	3 5/8	1 7/8	13/32	1 1/2	3/8	3 1/2	1/4	2.76	6 5/8	6 1/2
4	4 3/8	2 1/4	13/32	1 5/8	3/8	4 1/4	5/16	3.32	6 7/8	6 5/8

Not available on Series FINR, OINR or OIMNR.

NFPA INTERCHANGEABLE ROUND BODY CYLINDERS

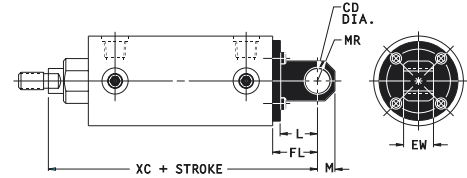
FLAIRLINE NFPA INTERCHANGEABLE CYLINDERS ARE AVAILABLE WITH YOUR CHOICE OF FACTORY INSTALLED MOUNTINGS



CLEVIS MOUNT (NFPA MP1)

Bore Size	DIMENSIONS							
	CB	CD	CW	L	LR	M	MR	XC
1 1/2	3/4	1/2	1/2	3/4	9/16	7/16	1/2	5 3/8
2	3/4	1/2	1/2	3/4	3/4	7/16	1/2	5 3/8
2 1/2	3/4	1/2	1/2	3/4	3/4	7/16	1/2	5 1/2
3 1/4, 4	1 1/4	3/4	5/8	1 1/4	1 1/8	5/8	3/4	6 7/8

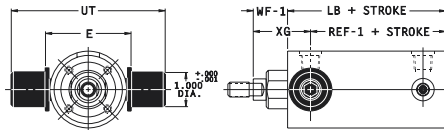
Pivot pin included.



PIVOT MOUNT (NFPA MP4)

Bore Size	DIMENSIONS						
	CD	EW	FL	L	M	MR	XC
1 1/2	1/2	3/4	1 1/8	15/16	7/16	1/2	5 3/4
2	1/2	3/4	1 1/8	15/16	7/16	1/2	5 3/4
2 1/2	1/2	3/4	1 1/8	15/16	7/16	1/2	5 7/8
3 1/4, 4	3/4	1 1/4	1 7/8	1 3/8	5/8	3/4	7 1/2

See Application Information for optional pivot pin.



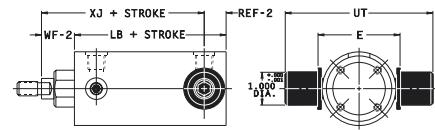
HEAD TRUNNION MOUNT (NFPA MT1)

Bore Size	DIMENSIONS					
	E	LB	REF-1	UT	WF-1	XG
2	2 1/2	3 5/8	2.96	4 1/2	1.08	1 3/4
2 1/2	3	3 3/4	3.08	5	1.08	1 3/4
3 1/4	3 3/4	4 1/4	3.41	5 3/4	1.41	2 1/4
4	4 1/2	4 1/4	3.41	6 1/2	1.41	2 1/4

Not available on Series FINR, OINR or OIMNR.

If cushions are required on cylinders with MT1 or MT2 mounts, the cushion adjustments are located in position 3.

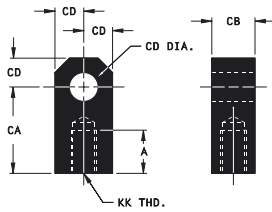
See page Application Information for accessories, special options, and ordering information.



CAP TRUNNION MOUNT (NFPA MT2)

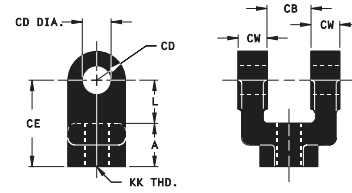
Bore Size	DIMENSIONS					
	E	LB	REF-2	UT	WF-2	XJ
2	2 1/2	3 5/8	.66	4 1/2	1.16	4 1/8
2 1/2	3	3 3/4	.66	5	1.16	4 1/4
3 1/4	3 3/4	4 1/4	.91	5 3/4	1.66	5
4	4 1/2	4 1/4	.91	6 1/2	1.66	5

NFPA INTERCHANGEABLE ROUND BODY CYLINDERS



ROD EYE*

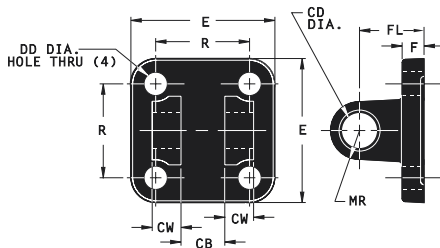
Bore Size	DIMENSIONS					
	Number	A	CA	CB	CD	KK
1 1/2, 2, 2 1/2	4-36-3	3/4	1 1/2	3/4	1/2	7/16-20
3 1/4, 4	4-36-65	1 1/8	2 1/16	1 1/4	3/4	3/4-16



ROD CLEVIS*

Bore Size	DIMENSIONS								
	Number	A	CB	CD	CE	CW	L	KK	
1 1/2, 2, 2 1/2	4-35-3	3/4	3/4	1/2	1 1/2	1/2	3/4	7/16-20	
3 1/4, 4	4-35-65	1 1/8	1 1/4	3/4	2 3/8	5/8	1 1/4	3/4-16	

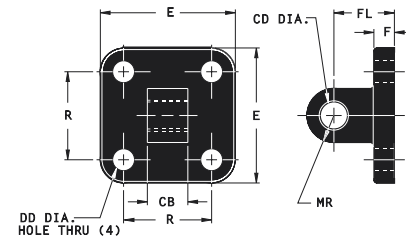
Pivot pin included.



CLEVIS BRACKET

Bore Size	DIMENSIONS									
	Number	CB	CD	CW	DD	E	F	FL	MR	R
1 1/2, 2, 2 1/2	4-34-3	3/4	1/2	1/2	13/32	2 1/2	3/8	1 1/8	1/2	1 5/8
3 1/4, 4	4-34-65	1 1/4	3/4	5/8	17/32	3 1/2	5/8	1 7/8	3/4	2 9/16

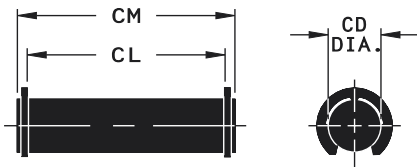
Pivot pin included.



PIVOT BRACKET

Bore Size	DIMENSIONS								
	Number	CB	CD	DD	E	F	FL	MR	R
1 1/2, 2, 2 1/2	4-37-3	3/4	1/2	13/32	2 1/2	3/8	1 1/8	1/2	1 5/8
3 1/4, 4	4-37-65	1 1/4	3/4	17/32	3 1/2	5/8	1 7/8	3/4	2 9/16

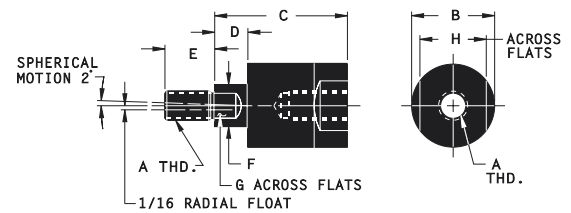
See optional pivot pin below.



PIVOT PIN

Bore Size	DIMENSIONS			
	Number	CD	CL	CM
1 1/2, 2, 2 1/2	BKT. PIN F 3 1/4, 4	1/2	1 7/8	2 1/16
3 1/4, 4	PIVOT PIN FI 3 1/4, 4	3/4	2 9/16	2 7/8

Snap rings included.



ALIGNMENT COUPLER*

Part Number	DIMENSIONS								Max. Pull at Yield
	A	B	C	D	E	F	G	H	
4-39-3	7/16-20	1 1/4	2	1 1/2	3/4	5/8	1 1/2	1	10,000
4-39-3A	1/2-20	1 1/4	2	1 1/2	3/4	5/8	1 1/2	1	14,000
4-39-65	3/4-16	1 3/4	2 5/16	1 1/2	1 1/8	31/32	13/16	1 1/2	34,000
4-39-65A	7/8-14	1 3/4	2 5/16	1 1/2	1 1/8	31/32	13/16	1 1/2	39,000

Alignment couplers improve bearing and seal life by preventing excessive binding and friction caused by misalignment. Flairline alignment couplers also allow greater assembly tolerances than would typically be required which help simplify cylinder installation. Alignment couplers work equally well in "push" or "pull" applications and are available for all Flairline cylinders.